



'GOING-ON' IN IRELAND

JULY 2010

SPECIAL EDITION as Cemex lands "biggest ever" contract

Welcome to this *special edition* of the Gylvon newsletter. We wanted to take the opportunity to focus on the progress that has been made in Ireland recently.

SUPAFLO

Cemex have won a major contract the flooring aspect of which is worth £500,000.

They will be supplying a flowing screed product for Our Lady & St.Patrick's School in Belfast, being built by O'Hare and McGovern, and at a new school in Co. Antrim (Northern Ireland),

"Cemex Supaflo" is one of the newest and most innovative products in Cemex' portfolio.

The product is made using a waste product from Cemex partner Lafarge Gylvon

Cemex Regional Director, Paul Connolly said the contract was their "*biggest ever*", and had helped secure the jobs of the company's 150-strong workforce in Northern Ireland.

"It's a cutting edge product and a major step forward in the green agenda," he said.

"with building contract timeframes becoming shorter and increasingly tight on budget we have reacted to the latest requirements of the building and construction industry and delivered a product which not only dries quicker, weighs less but has excellent thermal conductivity, which means that it is suitable for buildings that need underfloor heating systems."

He said Supaflo was protein-free so that it could not harbour harmful bacteria, making it a useful product for hospitals, nursing homes and education establishments.

Cemex has secured further contracts for Supaflo, including a deal with the Royal Victoria Hospital in Belfast.

Gylvon has now been in the UK for over 17 years and in mainland Europe for over 30, we are active in 11 countries and are the European market leader for Calcium Sulphate binder.

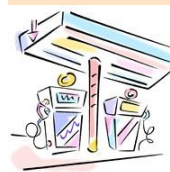
We are proud to say that we are partnered with Cemex in Ireland and have completed numerous prestigious projects together such as:

- the Royal Victoria Hospital
- Antrim Area Hospital
- Belfast City Hospital
- Castlereagh Council Offices

in addition to nursing homes and numerous residential projects.



MOTORWAY SERVICES IN IRELAND



The motorway services are in the process of being built by Pierse Contracting, using Gylvon in the floors, totalling 10,000m²

The new motorway service areas, at a cost of more than €100 million, are on the M1 at Castlebellingham, Co Louth, and at Lusk, Co Dublin; and on the M4 at Enfield on the Meath/Kildare border.

Because of the provision of service areas on both sides of the motorways in the three locations concerned, six facilities are being built.

The service areas will include shops, fuel pumps, parking areas for lorries, restaurants and hot showers.

Construction is expected to be completed by the end of 2010

It is estimated that some 500 jobs will be created during the construction phase, and around 250 full & part time jobs will be created when the three new service areas open.

UNIT 221 EUROPA BOULEVARD, WESTBROOK, WARRINGTON WA5 7TN

EMAIL: SALES@GYVLON.CO.UK

TEL: 01925 428780

WEBSITE: WWW.GYVLON.CO.UK

To unsubscribe from this Newsletter simply reply with UNSUBSCRIBE in the title bar