



## SYSTEM

Approx 600m<sup>2</sup> laid on Lewis Decking on 18mm Underfloor Heating Pipes. Laid 17.01.08.

## PROJECT

Medical Centre, Oakfield Surgery, Hamsterley Mill, Nr Rolands Gill.

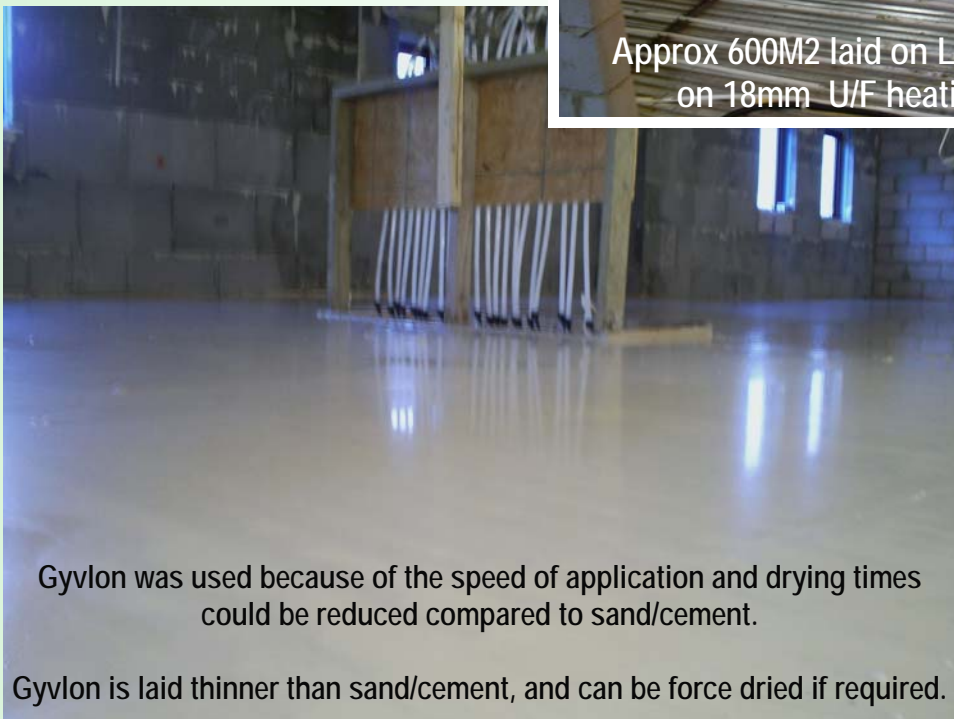


Applicator: Joe Thompson Flooring Ltd

Architects: MacKellar Architects, Newcastle.



Approx 600M<sup>2</sup> laid on Lewis Decking on 18mm U/F heating Pipes.



Gyvlon was used because of the speed of application and drying times could be reduced compared to sand/cement.

Gyvlon is laid thinner than sand/cement, and can be force dried if required.

Case History

Lafarge Gyvlon Ltd  
Europa Boulevard, Westbrook  
Warrington WA5 7TN

