



SYSTEM

Concrete Slab with Timber Upper Floor and Underfloor Heating

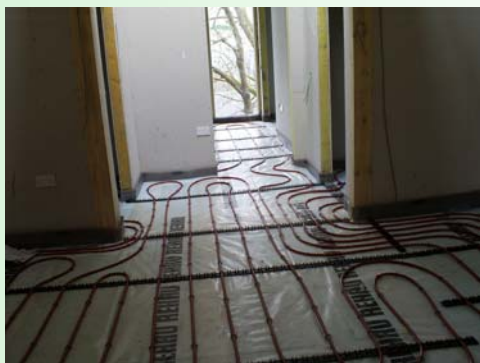
PROJECT

Self Build Project, Timber Frame Building, Dullatur, Scotland



Ground Floor:
200mm concrete slab
75mm insulation
Rehau underfloor heating
Average 55mm screed

Upper Floor:
Screed applied on 140mm
Timber with Underfloor Heating



Keith Duncan Architects, Edinburgh
For Barr Construction, Scotland



Case History

Lafarge Gyvlon Ltd
Europa Boulevard, Westbrook
Warrington WA5 7TN

