



## SYSTEM

**Robust Detail E-FC-6  
Beam & Block (100mm dense)  
8mm Regupol, 40mm Gyvlon**

## PROJECT

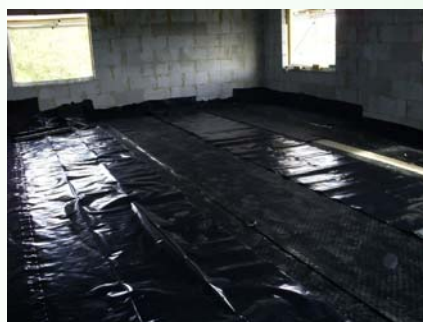
**32 Apartments, 3 Rivers Housing Association  
Bishop Auckland, Co.Durham, 1,800 m<sup>2</sup> approx**

**Main Contractor: AA Construction, Gateshead**

This had originally been a sand/cement specification however the Contractor wanted to use Gyvlon to speed the build programme before the onset of bad weather when the freezing temperatures forecast meant that they would be unable to lay sand/cement.



The specification change was welcomed by 3 Rivers Housing Association and the Clerk of Works was impressed with the speed and efficiency of both the preparation and the screed itself.



Case History

Lafarge Gyvlon Ltd  
Europa Boulevard, Westbrook  
Warrington WA5 7TN

