



SYSTEM

Precast planks, 25mm EPS insulation, 50mm Gyvlon with UF heating

PROJECT

RNIB College, Venn's Lane, Hereford (Residential Blocks)



Gyvlon was chosen by the architect for its reduced design thickness over underfloor heating and was approved by Morgan Ashurst due to its speed of application which reduced build programmes

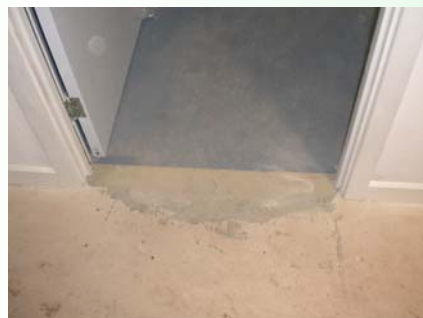
The residential blocks consisted of residential flats with bathrooms and communal kitchens which utilised various floor covering including, Carpet, Vinyl and Laminate floor.

Underfloor heating is installed in all flats and communal areas.



Gyvlon following a light sanding to create a good mechanical key ready to receive the Epoxy primer and adhesive for the final Vinyl finish

Vinyl floor covering applied to Gyvlon screed complete with primer and latex levelling compound, the remainder areas in the apartment were loose fitting carpet.



Case History

Lafarge Gyvlon Ltd
Europa Boulevard, Westbrook
Warrington WA5 7TN

