



SYSTEM

Beam and Block to all floors with 50mm polystyrene insulation covered in 40mm Gyvlon screed.

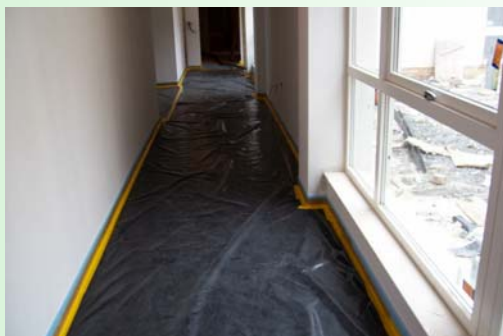
PROJECT

CARE HOME (60 bed)
Greendykes Road, Craigmillar,
Edinburgh Apartments



This is a project for the City of Edinburgh Council

The main contractor is Graham Construction. Lafarge Gyvlon was specified by Rick Henderson and Jonathan Potter of Robert Potter Architects, Glasgow



Graham Construction were keen to use Gyvlon due to its speed of installation which suited their build programme. The area laid was approx 2,500 m², laid in 4 applications of approx 600 m² each

Floor was easily dappled to SR2.

There were both hard and soft floor coverings to this development



Case History

Lafarge Gyvlon Ltd
Europa Boulevard, Westbrook
Warrington WA5 7TN

