



SYSTEM PROJECT

SoundBar (timber) E-FT-4

**24 New Build Apartments for private occupation
Laing Homes (part of the Wimpey Group),
Bushmead Road, Eaton Socon.**



System specified by client Laing Homes for project to employ pre completion sound testing to part E of building regulations and screed installed

Soundbar Gyvlon supplied by Lafarge Readymix plant at Bedford.

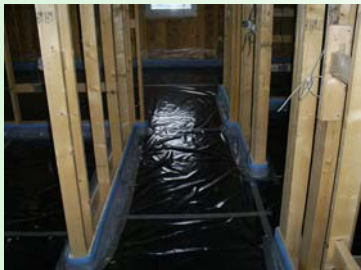


Gyvlon selected system for:

High level of acoustic insulation..

..compared to traditional timber frame, the system has a solid feel with no creaky floors post installation

Client able to offer customer choice floor coverings



Significant cost saving..

...against traditional timber floors

Speed of installation

Four flats screeded with 325 square metres at 40mm thick of Soundbar Gyvlon and finished in under 3 hours.



Case History

Lafarge Gyvlon Ltd
Europa Boulevard, Westbrook
Warrington WA5 7TN

